



# SmartWasher®

Environmentally friendly parts washer

**Be Smart GO “GREEN”**



**Make everyday a World Environmental Day and meet Sustainable development objectives!**

- **Lighten your workshop's environmental footprint** and meet Global Sustainable Development Goals!
- Create a **safer work environment** for your employees and maintenance staff.
- Reduce **waste footprint**, business's transport and logistic costs!

Traditionally, **solvent baths** have been the go-to solution for cleaning greasy components. Unfortunately, solvents are also **flammable, environmentally damaging, toxic for human consumption, and they're difficult to dispose of.**

Fortunately, there's now a smarter solution to these problems thanks to **CRC's SmartWasher®.**

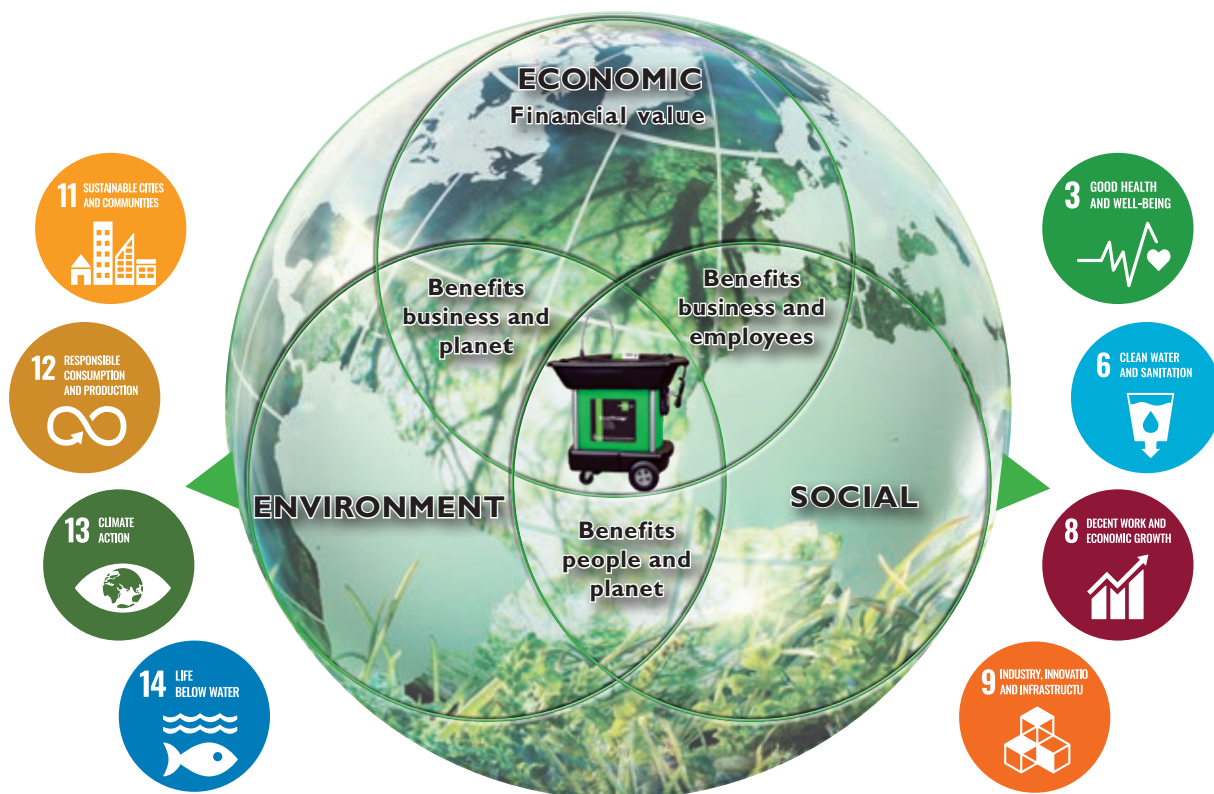
Using a scientific process called 'bioremediation', the **CRC SmartWasher®** uses microbes to break down and neutralize hazardous substances and contaminants!

The cleaning solution is also non-toxic, completely harmless in the Food Environment, has a NSF A1 Rating, and is reusable for months on end!





## SmartWasher® value proposition for Sustainable Development



## What is Bioremediation

**Bioremediation is the use of microbes to break down and “eat” oil, grease, and carbon-based contaminants. This proven biotechnology is used to assist in the clean-up of wastewater treatment ponds and lagoons in petroleum refineries and industrial manufacturing facilities all around the world**

The system combines three essential components – the CRC SmartWasher® parts washer, the Ozzyjuice® cleaning fluid, and the OzzyMat® filter that contains a proprietary blend of microbes.

### How it works

1. Oil contaminants enter the solution as parts are washed.
2. Surfactant in Ozzyjuice® solution emulsifies the oils.
3. Emulsified oil is eaten by the Ozzy® microbes.
4. Oil is converted into water and carbon dioxide

### The Performance Advantage

CRC SmartWasher is effective, even on the toughest carbon, grease, gunk, and oils.

- Exceptional Cleaning Power – meets or exceeds the cleaning performance of manual solvent or aqueous parts washers
- Self-Cleaning Solution – The bioremediation process keeps the fluid clean ready to use time after time

### The Cost Advantage

When you compare traditional parts washers against the CRC SmartWasher, the savings are clear

- Less Spending – No ongoing purchase of solvent cleaners
- Minimized Waste – No changing or hauling away of cleaning fluids
- No Contracts – Eliminates hazardous waste removal contracts

### The Safety Advantage

A CRC SmartWasher® delivers exceptional cleaning without any of the health risks associated with solvent and aqueous-based parts washers meaning that it is safer for you and for the environment.

- Ozzyjuice Cleaning Fluids – Non-irritating, Non-flammable, Non-hazardous, pH neutral
- Safer for Employees
- Non-flammable and no contact with harmful solvents
- Safer for the Environment – No hazardous waste to recycle making it truly sustainable





## The SmartWasher® Bioremediating Parts Washing System is both self-cleaning and non-hazardous

- Non-toxic
- Non-flammable
- Non-polluting
- Non-hazardous
- Non-corrosive



**Code 14740**  
**SW-23 Model**  
**Mobile Parts Washer Kit**

(1x SW23 unit +3 Pails SW4 Fluid +  
1x FL 4 Filter)



**Code 14741**  
**SW-437 Model**  
**Mobile Heavy Weight Parts Washer Kit**

(1x SW37unit +5 Pails SW4 Fluid  
+ 1x FL 4 Filter)

### COMPARISON CHART

Details	SW-23 Mobile parts washer	SW-437 mobile heavyweight parts washer
Overall dimensions	109cm x 68.5cm x 107cm	122cm x 89cm x 114cm
Inside sink dimensions	68.5cm x 58cm x 20cm	84cm x 68.5cm x 20cm
Capacity	57 l (3 units X 19 l)	95 l (5 units X 19 l)
Load Capacity	182 kg	454 kg
Parts Washer Structure	Heavy Duty HDPE	Heavy Duty HDPE
Controls	Toggle Switch	Toggle Switch
Pump Capacity	1 136 LPH	1 136 LPH
Adjustable Thermostat	40 °C to 46 °C	40 °C to 46 °C
Flow control timer	10 minutes	10 minutes
Certified	ETL(UL/CSA), CE, NSF	ETL(UL/CSA), CE, NSF

## OZZYJUICE®

OZZYJUICE is a powerful, aqueous based degreasing solution that is **pH-neutral, non-irritating, non-flammable, and non-toxic**. Armed with superior cleaning capability, the OZZYJUICE solutions will match or surpass the performance of a premium solvent without all the associated risks. All OZZYJUICE solutions are certified by both NSF and AQMD.

## THE OZZYMAT

The OZZYMAT traps particulate down to 50 microns in size but more importantly contains OZZYS (microbes). The OZZY microbes, impregnated in the OZZYMAT, are transported along with the OZZYJUICE into the SmartWasher® tank. These naturally occurring OZZY microbes eat the grease, oil, and other contaminants cleaned off the dirty parts and create the harmless by-products of carbon dioxide and water.

## OZZY® MICROBES

The OZZY Microbes do their job eating the grease, oil and other contaminants, cleaning off the dirty parts, creating the harmless by-products of carbon dioxide and water, leaving the OZZYJUICE clean and strong and ready to use.



### OzzyJuice (Heavy Duty Degreaser Solution)

Code 14148

SW-4 Heavy Duty Solution (19 l)



### OzzyMat (Filter)

Code 14124

FL-4 Multi-layer filter (4 x filters)

Depending on usage, a pack lasts between 4 - 6 months)



### SmartWasher® Start-up Kit

Code 14740

SW-23 Mobile Parts Washer Kit

(1x SW23 unit +3 Pails SW4 Fluid + 1x FL 4 Filter)



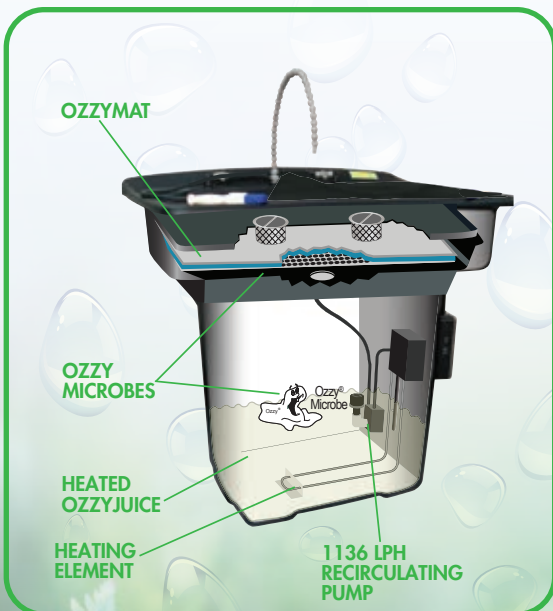
Code 14741

SW-437 Mobile Heavy Weight Parts Washer Kit

(1x SW-37 unit +5 pails SW -4 Fluid + 1x FL Filter)



Video Link: <https://youtu.be/dE2IKd25iAk>



CRC Industries RSA (Pty) Ltd

Tel: 011 452 7048

Rick Ellis +27 (0) 78 097 8028 - [rick.ellis@crcind.com](mailto:rick.ellis@crcind.com)

[www.crcindustries.co.za](http://www.crcindustries.co.za)